





If you want remarkably comfortable, exceptionally stylish office chairs that don't cost an arm and a leg, you want Mayline. From the reception desk to the executive suite, from the training room to the boardroom, from the lab to the cafeteria, our chairs delight both workers and their employers with long-lasting value. Every chair is backed by our limited lifetime warranty and is available to ship in as little as 72 hours. Choose Mayline to get all the seating you need, exactly when you need it – for less than you'd imagine!

SEATING SELECTIONS:

Commute™ Pages 4-5	Valoré® Pages 6-7	Ultimo™ Series Pages 8-11	Mercado™ Series Pages 12-12	Comfort Series Pages 18-20	Technical Series Page 21	Bistro Series™ Pages 22-23	Lounge Pages 24-26	Event Series Pages 27
-----------------------	----------------------	---------------------------------	-----------------------------------	----------------------------------	--------------------------------	----------------------------------	-----------------------	-----------------------------

WE'LL SAVE YOU (A BUNDLE ON) A SEAT.



Valoré® THS1 Chairs with Black mesh backs and Black fabric seats.
Shown with TransAction® Series Boat-shaped Conference Table.



Commute Chair with Black mesh back and Flection Tango fabric seat. Shown with e5 Desking.

A custom sit.

Tired of chairs that require an engineering degree to operate?

Commute offers easy, intuitive fingertip adjustment of height, tilt, recline and seat slide. It's the simple solution for every body ... and it's simply a better deal than other chairs in this class.

TASK/EXECUTIVE CHAIR

- Synchro-tilt seat mechanism.
- Seat slider, tilt tension, tilt lock.
- Black or Chrome base.
- Black mesh or upholstered back.
- Class 4 chair cylinder.
- Available with or without adjustable arms.
- Meets or exceeds ANSI/BIFMA standards.



Black Mesh



150-plus Momentum® fabric options



C1CB

TASK



C1BB



C1CB

EXECUTIVE



C1BU



C1CU

CONFERENCE



B3BB



B2BB

- Swivel-tilt mechanism.
- Black nylon base.
- Black mesh back only.
- Class 4 chair cylinder.
- Fixed loop arms
- Meets or exceeds ANSI/BIFMA standards.

- Swivel-tilt mechanism.
- Black nylon base.
- Black mesh back only.
- Class 4 chair cylinder.
- No arms.
- Meets or exceeds ANSI/BIFMA standards.

VALORÉ® SERIES

Versatile value.

Valoré shines anywhere you put it – training rooms, offices, collaborative areas and even hospitality settings.



Valoré TSH1F Chairs with Black mesh back and Fuse Pimento fabric seat. Shown with Sync Training Tables.

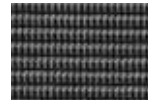


TSH1 HIGH-BACK CHAIR

- Black fabric seat.
- Integrated arms.
- Comfortable recline action.
- Chrome frame.
- Optional chair glides.



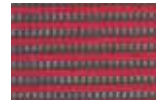
Black Fabric



Black Mesh



Orange Mesh



Red Mesh



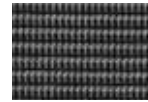
TSH2 CHAIR

- Black fabric seat.
- Comfortable recline action.
- Chrome frame.
- Optional chair glides.



TSH1F UPHOLSTERED CHAIR

- Black mesh back (only).
- Upholstered seat.
- Integrated arms.
- Comfortable recline action.
- Black or Chrome frame.
- Optional chair glides.



Black Mesh



150-plus Momentum® fabric options



TSH2F UPHOLSTERED CHAIR

- Black mesh back (only).
- Upholstered seat.
- Comfortable recline action.
- Black or Chrome frame.
- Optional chair glides.

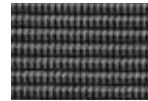


TSM2 ARM CHAIR

- Black fabric seat.
- Integrated arms.
- Brushed Silver frame.
- Optional chair glides.



Black Fabric



Black Mesh



Orange Mesh



Burgundy Mesh



TSH3 TASK CHAIR

- Mesh back with Black fabric seat cushion.
- Integrated arms.
- Basic height adjustability.
- 5-star, 27" aluminum base.



Black Fabric



Black Mesh



Orange Mesh



Red Mesh

ULTIMO™ SERIES



High-end comfort, low-down price.

Ultimo is a family of ultra-luxurious, ultra-comfortable seating for executive, conference and task settings. Crafted with top grain leather, sculpted dual-density foam, detailed stitching and full-featured adjustments, it's the ultimate office chair – for a less-than-ultimate budget.

SERIES 100

- Top grain cowhide leather on all seated surfaces.
- Molded foam helps retain cushion shape.
- Deluxe knee-tilt mechanism with tilt-lock for easy reclining.
- Pneumatic seat height adjustment.



Black Leather



Burgundy Leather



ULEX

- Generously sized, sculpted deep cushions.
- Padded leather cantilevered armrests.



ULMGR

- Sculpted deep cushions.
- Padded leather loop armrests.



ULGST

- Sculpted deep cushions.
- Padded leather armrests.
- Tubular steel frame.

ULTIMO SERIES

SERIES 200

- Top grain cowhide leather on all seated surfaces.
- Molded foam helps retain seat cushion shape.
- Deluxe knee-tilt mechanism with tilt-lock for easy reclining.
- Pneumatic seat height adjustment.



UL230M



Black Leather



Double-stitched seams add a strength typically reserved for more costly chairs.



Ultra-soft perforated leather cushions enhance comfort and breathability.



Padded leather loop armrests relieve forearm stress in distinctive style.

SERIES 300

- Top grain cowhide leather on all seated surfaces.
- Molded foam helps retain seat cushion shape.
- Pneumatic seat height adjustment.



Black Leather



Burgundy Leather
(Limited time only.)



UL350H

- Thickly padded contoured leather seat and back.
- Pronounced lumbar support.
- Padded leather loop armrests.
- Deluxe knee-tilt mechanism with tilt-lock for easy reclining.



UL330M

- Same features as UL350H, but with 2-to-1 synchro-tilt control.
- Adjustable height and width
- Padded leather armrests.



UL330M offers 2-to-1 synchro-tilt control for ultimate reclining comfort. For every two degrees the back reclines, the seat reclines one degree.

SERIES 500

- Ultimo EZ-Assemble Series: assembles in minutes.
- Ultra-soft, perforated leather cushions.
- Padded leather loop armrests.
- Deluxe knee-tilt control.
- Pneumatic seat height adjustment.

UL550HEZ

- Accentuated with gathered seams on seat and back.
- Durable steel frame construction.



Assembly is easy as 1-2-3.



Black Leather

MERCADO™ SERIES



Mercado AL Chairs shown with Mira Conference Furniture.

Sophistication and savings.

Mercado combines contemporary style with old-fashioned comfort to polish your image and please your employees – all at a surprisingly affordable price.

- Leather on most seated surfaces.
- Padded leather armrests on most models.
- Deluxe knee-tilt control on most models.
- Pneumatic seat height adjustment.



3200

- Black fabric seat with mesh back.
- Synchro-tilt.
- Adjustable lumbar support and arms.
- Tilt tension.
- Pneumatic seat height adjustment.
- Height/width-adjustable T-arms.



2522

- Black leather and mesh fabric.
- Chrome 5-star base.



FL

- Defined headrest.
- Height-adjustable, pivoting armrests.
- Chrome 5-star base.



Black Leather



Pivoting arm allows for easy access and comfort on FL Chair.

MERCADO SERIES



PR

- Deep pillow-style cushions.
- 5-star cast-aluminum arms and base with chrome finish.



OPM

- Deep cushioned seat and back.
- Built-in lumbar support.
- 5-star cast-aluminum arms and base with chrome finish.



Black Leather



Swooping padded leather armrests with chrome detail add a distinctive design touch.



Chrome-finish 5-star cast-aluminum base with dual-hooded casters is as attractive as it is strong.



SSM

- Optional armrests.
- Black nylon 5-star base.
- Deluxe knee-tilt control.

Note: Limited quantities available.



AL

- Black nylon armrests.
- Cast-aluminum 5-star base with chrome finish.
- Center tilt control.



2528

- Black leather and mesh fabric.
- Adjustable arms.



2547

- Black leather on seated surfaces.
- Sturdy loop arms.



TC2250

- Black fabric task chair.
- Multi-function mechanism.
- Back adjusts independently.
- Four-way adjustable arms.

MERCADO™ WOOD

The warmth of wood.

Mercado's sleek, modern profile becomes softer and warmer with the addition of a few well-chosen wood surfaces, in finishes that match Mayline's REAL Office™ casegoods.

CS

- Deep cushioned seat and back.
- Genuine leather on all seated surfaces.
- Deluxe knee-tilt control.
- Swivel seat with pneumatic height adjustment.
- Tilt tension and tilt lock.
- Solid wood 5-star base.



Black Leather



Sierra Cherry



Mahogany



Solid wood armrests with Black leather padding.

MERCADO WOOD SERIES

- Stylish guest seating for reception areas and private offices.
- Solid wood construction.
- Wood finishes match REAL Office casegoods.
- Leather on all seated surfaces.
- Fully assembled frames.
- Shipped 2/carton except VSC9 (1/carton).



VSC9



VSC5A



VSC7A



VSCA



VSC2A



VSC3A



Black Leather



Cream Leather
(VSC5A & VSC7A only)



Maple



Golden Cherry



Sierra Cherry



Bourbon Cherry



Medium Cherry



Espresso



Mahogany

FINISHES

	Sierra Cherry/ Black	Mahogany/ Black	Golden Cherry/ Black	Bourbon Cherry/ Black	Espresso/ Black	Espresso/ Cream	Medium Cherry/ Black	Maple/ Black
VSCA	•	•	•	—	—	—	•	•
VSC2A	•	•	—	—	•	—	—	—
VSC3A	—	—	—	•	•	—	•	•
VSC5A	•	•	—	•	—	•	—	—
VSC7A	•	•	—	—	—	•	—	—
VSC9	•	•	—	—	—	—	—	—

COMFORT SERIES

Sit in balance.

All of the chairs in the Comfort Series provide a balanced seating experience to help reduce stress on the muscles of the thighs, back, neck and shoulders.



9413AG ■ ■ ■ ■ ■



9413AGL ■ ■

Visual key below each chair displays available colors.



9414AG ■ ■ ■ ■ ■



4019AG ■ ■ ■



4021 ■ ■ ■
(shown with optional arms)

- Balanced seating design helps reduce stress on thigh, back, neck and shoulders.
- Inflatable lumbar support is orthopedically designed to enable a customized adjustment.
- Tailbone cut-out on several models allows tailbone to free float, reducing fatigue and pressure on lower back.
- Swivel seat with pneumatic height adjustment.
- Durable acrylic/poly blend upholstery.
- Five-star base with dual hooded casters.
- 9413AG also available in leather. 4019AG and 4021 available in fabric only.



Black Leather



Black



Gray



Blue



Burgundy



The ratchet back height adjustment available on some models adjusts quickly and effortlessly.



Inflatable lumbar support provides orthopedically-designed custom support for the lower back.

COMFORT SERIES

Enhanced support.

Built to last for larger individuals, these chair series offer reinforced seating frames and heavy-duty components.

BIG & TALL

- Inflatable lumbar support is orthopedically designed for customized adjustment.
- Swivel seat with pneumatic height adjustment.
- Oversized cast aluminum, five-star base with dual hooded casters.
- Steel reinforced seat plate.
- Heavy-duty, high-density foam cushions.
- 6446AG features pivoting arms for easy access.
- Available in fabric or leather.



6446AG ■ ■ ■ ■ ■



6446AGL ■ ■ ■



1801AGL ■ ■ ■



1801AG ■ ■ ■

Visual key below chair displays available colors.

24-HOUR CHAIR

- Independent adjustment of seat and back angle.
- Chair seat tilts forward and rearward with tilt tension adjustment.
- Seat cushion features memory foam.
- Optional height-adjustable arms.
- Sculpted, height-adjustable back.
- 300 lb. weight rated.
- Available in fabric or leather.



Black Leather



Black



Gray



Blue



Burgundy



2424AGL with 12ADJARM
(shown with optional arms)



2424AG with 12ADJARM
(shown with optional arms)

TECHNICAL SERIES

Booster seats.

Designed for labs and other environments where higher seats are needed, our Technical Series stools offer easy mobility and all-day comfort.

MULTI-TASK STOOLS

- Pneumatic 10" height adjustment.
- Extra-dense foam and large, 5-star nylon base.
- Durable polyester fabric.



2610



2660



Black

SWIVEL TASK STOOL

- Inflatable lumbar support is orthopedically designed for customized adjustment.
- Swivel seat with pneumatic height adjustment.
- 5-star base with dual hooded casters.
- Optional height-adjustable arms.
- Twist-and-lock, height-adjustable foot ring.
- Back height and seat depth adjustment.
- Durable acrylic/poly blend.



Black



Gray



Blue



Burgundy



4005AG



Optional T-shaped arms are height-adjustable and have comfortable, impact-resistant urethane arm rests.

BISTRO SERIES™

Social chairs for social spaces.

Designed to complement our Bistro line of hospitality tables, Escalate and Bistro chairs are perfectly sized for dining and bar height. They're also easy to clean and maintain.



Escalate ESC2 Chair and ESS2 Barstool shown with Bistro Tables.

ESCALATE SEATING

- Black polypropylene surfaces.
- Chrome legs.
- Optional Chair Trolley eases transport and storage.



ESC2 Chair



ESS2 Stool



EST Chair Trolley

BISTRO SEATING

- Comfortable mesh backs with Black fabric cushions.
- Tubular steel frame in Silver.
- Integrated foot glides.
- Chairs stack up to 4 high.



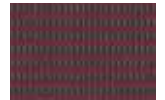
Black Fabric



Black Mesh



Orange Mesh



Burgundy Mesh



TSC2 Chair



TSS2 Stool

LOUNGE SEATING



Santa Cruz™ Mobile Chairs with Tablets and Storage Ottoman in Almond leather.

Aaaah-some.

The perfect complement to a Mayline reception station – or anywhere you want to make people feel exceptionally welcome. Our lounge furniture delivers lush looks and plush comfort.

SANTA CRUZ® LOUNGE

- Contoured arms for exceptional comfort.
- Genuine leather on all seated surfaces.
- Black leather standard with Mahogany feet, almond leather standard with Black feet.
- Optional Foot kits available for VCC1, VCC2 and VCC3 in finishes shown.



Black Leather



Almond Leather

Wood finishes match REAL Office casegoods.



Maple



Golden Cherry



Sierra Cherry



Cherry



Espresso



Mahogany



VCC1 Chair



VCC2 Settee



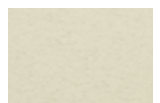
VCC3 Sofa

SANTA CRUZ® MOBILE LOUNGE

- Heavy-duty black double-wheel casters in front, black wood feet in back.
- Brushed aluminum handle on back allows easy transport.
- Genuine leather on all seated surfaces.
- Optional 360° swivel tablet in Chestnut.
- Tablet height is 27".
- Storage ottoman has four casters and reversible lid with Chestnut interior.



Black Leather



Almond Leather



Chestnut



VCCM Mobile Lounge Chair



VCCMT Mobile Lounge Chair
with Tablet



VCC Storage Ottoman

PRESTIGE SERIES

- Solid hardwoods, genuine leather upholstery and clean, modern lines.
- All seating surfaces covered in Black leather.
- Visually and dimensionally compatible with a wide range of Mayline occasional tables.



Black Leather



Sierra Cherry



Mahogany

Wood finishes match
REAL Office casegoods.



VCL1 Chair



VCL2 Settee



VCL3 Sofa



Prestige Chair, Sofa and Settee in Black Leather with
Sierra Cherry Finish. Shown with Corsica® Tables.

EVENT SEATING

Foldable, stackable, affordable.

Our Event Series seating adapts to multiple functions and diverse environments, from business meetings to banquet facilities to outdoor events. An ideal complement to our Event Series folding tables.



2200FC

- Overlapping back protects frame from scratches.
- Non-marring polyethylene foot caps.
- Powder-coated frames match chair color.
- Finishes: Wedding White, Black, Neutral.



5000FC

- Contoured polyethylene seat and back.
- Arched cross-braces on the legs for exceptional stability.
- Gray Hammer-Coat frame.
- Finish: Textured White.



2300SC

- 16-gauge 5/8" round high-strength steel tubing.
- Extra wide seat in a lightweight design.
- Black powder-coated frames.
- Finishes: Black, Blue.



6310FC

- One piece polypropylene seat shell.
- Frame cover protects against snags and adds strength.
- Black powder-coated frames.
- Finishes: Black, Blue.

T.E. Berry & Associates

PO Box 9606
Wichita, KS 67277-0606
316 942-4100
info@teberry.com



White



Black



Neutral



Blue



Gray Hammer-Coat Frame