



TransAction™
Contemporary Workplace Furniture





TransAction™ is all about making connections. Between co-workers. Between people and technology. Between different areas of an organization. It offers basic benching for teams on the go, personal workstations for privacy and focus, and extreme technology support for media-intensive offices and conference rooms. The open-plan architecture saves space and the intuitive design saves hassle. The only disconnect you may experience is the price tag – you won't believe a solution this sophisticated can cost so little.

TABLE OF CONTENTS:

Benching Pages 4-5	Personal Workstations Pages 6-9	Technology Intensive Pages 10-11	Conference Pages 12-15
-----------------------	---------------------------------------	--	---------------------------

IT'S ALL ABOUT CONNECTION.



BENCHING



More people, less space.

The workbench was a cornerstone of the Mayline product offering some 60 years ago. Here it is again, reengineered for a new age. Dual- and single-sided desks make it easy to create real estate-efficient configurations that accommodate “drop-in” workers or collaborative teams. A unique starter/adder system greatly simplifies ordering while enhancing flexibility for reconfigurations and expansions. User-friendly power/data capabilities and mobile storage boost productivity.



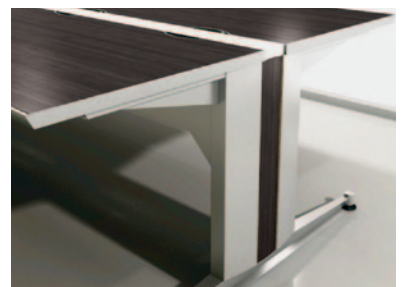
Dual-Sided Workstations in Asian Night laminate and Tech Silver finish. Commute™ Chairs in Expo Latte fabric. Background: Santa Cruz® Lounge Chairs in Almond Leather.



A technology trough routes power and data to worksurface outlets for convenient access.



Frosted Acrylic Privacy Screens boast flame-polished edges to give the appearance of glass.



Leg panel inserts match laminate worksurfaces to create a distinctively modern visual motif.

PERSONAL WORKSTATIONS



Let's keep this private.

Even people who work together most of the time have to work alone some of the time. TransAction™ works for them all of the time. Fabric panels define boundaries and allow the display of favorite mementos. Generously sized worksurfaces offer plenty of room to spread out and tackle multiple projects at a time. Easy-to-reach personal storage options and power/data hookups enhance comfort and efficiency. It's a private space that also supports impromptu collaboration.



Tackable, eco-friendly Privacy Panels are offered standard in all Mayline corporate fabrics.



Removable surface panels on both sides of technology trough allow direct access to power/data.

PERSONAL WORKSTATIONS



120-Degree 3-Pod Workstation in Luna Night laminate with Pedestals and Bookcase Towers in Tech Silver finish. Commute™ Chairs in Expo Sprout fabric.

Three degrees of separation.

One size does not fit all when it comes to collaborative workspaces. Some workers need a bit more surface space, a little more privacy, a higher degree of separation. They need the TransAction™ 120-Degree Workstation. This three-person pod delivers a roomier office for each individual while still minimizing the overall footprint. Angled acrylic panels divide space while allowing communication between team members. Technology troughs between stations easily accommodate computers, mobile devices and other electronics.



Single-Sided Desks and Returns in Designer White laminate with Pedestals in White finish. Tackboards in Crosstown Ray fabric. Commute™ Chairs in Expo Latte fabric.



Bookcase Towers incorporate two adjustable shelves and a choice of two pedestal configurations.



Mobile File Centers with cushions provide lockable storage and serve as casual seating for quick collaborations.

TECHNOLOGY INTENSIVE



Single- and Dual-Sided Workstations in Asian Night laminate and Tech Silver finish. Valoré® TSH3 Chairs in Black fabric.

Built tough, built smart.

TransAction™ was originally developed for financial trading applications, where furniture requirements are taken to an extreme. It's tough enough to stand up to the most abusive, demanding environment while providing immediate access to critical data. An ingeniously simple flat-screen monitor mounting system works in conjunction with advanced power/data options to keep users plugged into multiple information sources. Preconfigured dual-circuit Power Kits run beneath desk surfaces and an optional Data Channel separates power and data.



Rugged aluminum posts with articulating arms securely support up to eight flat-screen monitors per user. A CPU Holder can be mounted underneath the desk.



User-friendly arms allow easy adjustment of heights and viewing angles on flat-screen monitors. Keyboard and mouse platforms are also available.

CONFERENCE



Conference Table in Mocha laminate and Tech Silver finish. Valoré® TSH1 Chairs in Black fabric.
Background: Aberdeen® caseloads in Mocha laminate.



CONFERENCE



Media Table in Mocha laminate and Tech Silver finish. Bistro Series™ Stools in Black fabric. Background: Aberdeen® casegoods in Mocha laminate.

Take a seat at the power table.

You don't have to choose between a great-looking conference room and a connectivity-rich conference room. TransAction™ impresses on both counts. The sleekly modern design is matched by cutting-edge technology support that puts all the power and data you need right at your fingertips. Or not – by popular demand, you can also get these stylish tables without power. Boat-shaped, Rectangular and Racetrack Tables are available in sizes up to 24 feet long, with laminate top surfaces.



TransAction™ laminate surface options match those in our REAL Office™ casegoods collections, so you can coordinate tables with a wide variety of storage and presentation components.



Optional Power/Data Packages install under a floating acrylic cover for easy access to six power outlets and three telecom plates. Additional telecom options and a hardwire infeed are also available.



Cords route horizontally through an under-surface trough and vertically within the table leg.



Table troughs can be outfitted with optional rack mount, VGA and custom plate options.

T.E. Berry & Associates

PO Box 9606
Wichita, KS 67277-0606
316 942-4100
info@teberry.com